

**Luxury Deluxe Twin**  
 (Universally designed room)  
 47.0m<sup>2</sup> 2 rooms

**[Different facilities from Deluxe rooms]**

- Separate bathroom (Toilet & Bath / Basin)
- Width of door and slope
- Width between beds

The corner mirror can make the room appear larger. To prevent guests with low vision from thinking that there is an extended space beyond, an arm chair has been placed there for safety reasons.

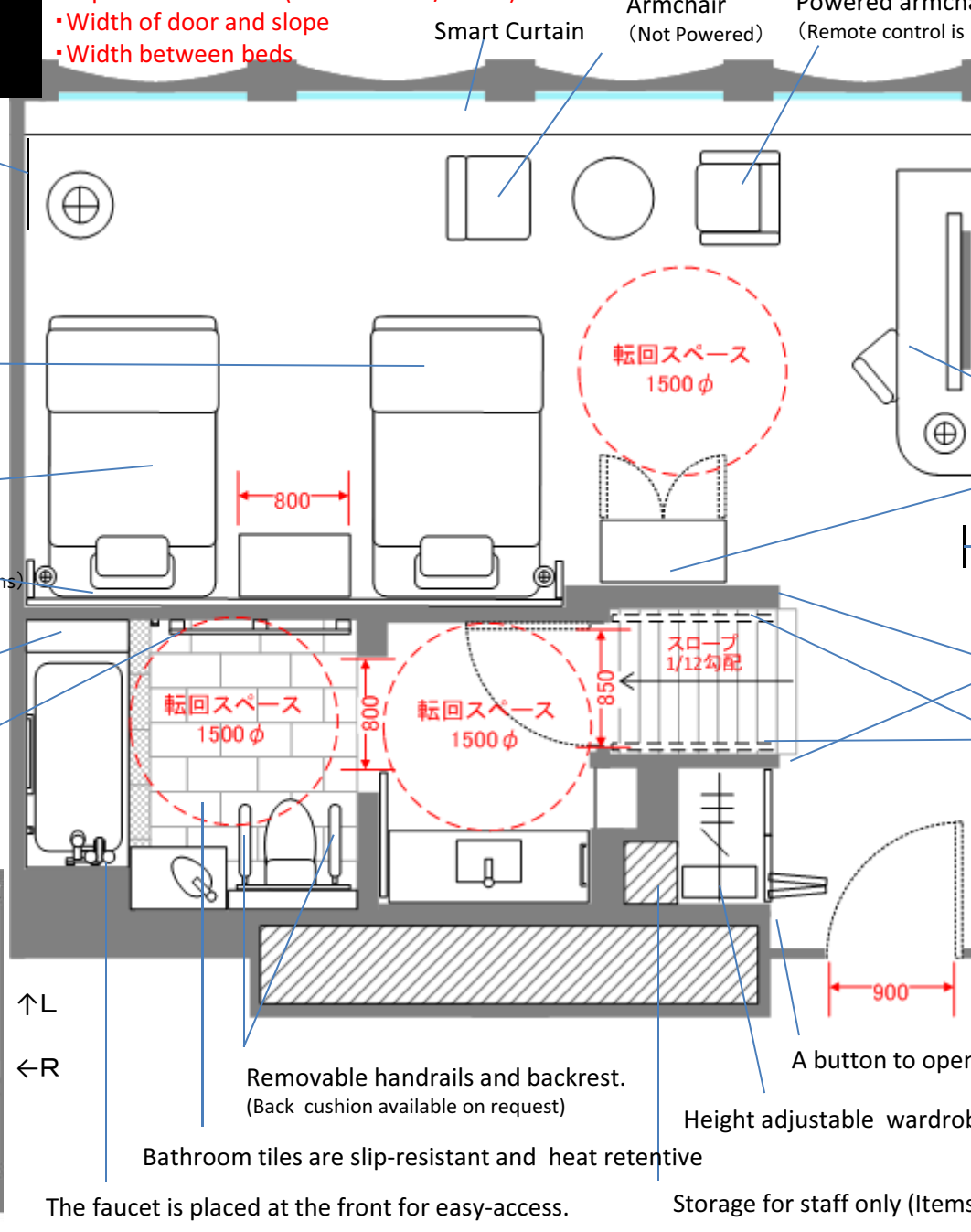
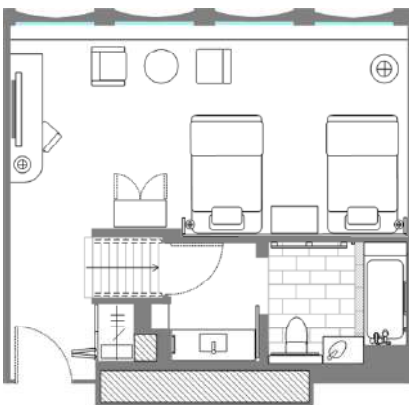
Electric adjustable bed  
 (Remote control is available on request)  
 120cm\*195cm\*48~80cm

Regular Bed  
 120cm\*203cm\*46cm

Control panel  
 (Remote control for lighting and curtains)

Positioning Space (74cm\*30cm)  
 Height of the bathtub 50cm, depth of 46cm

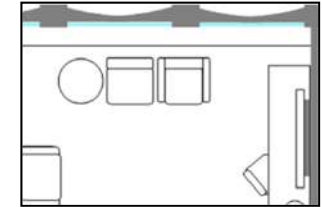
Multi-use rails/hanger



Armchair  
 (Not Powered)

Powered armchair  
 (Remote control is available on request)

For wheelchair users, the armchair will be set facing the bed. ↓



Under the desktop, there is an indentation to provide a better grip (Height of the desk :72cm)

Mini-bar

Door Monitor  
 (Visitors will appear on the screen.)

The pillar-grab handle

Handrail installed on the wall of the bothside

Slope - 1/12  
 (Length 156cm, Height 12cm)

Removable handrails and backrest.  
 (Back cushion available on request)

Bathroom tiles are slip-resistant and heat retentive

The faucet is placed at the front for easy-access.

Height adjustable wardrobe hanger bar (170cm、120cm)

Storage for staff only (Items available for use )

↑L  
 ←R

# Luxury Deluxe Twin (Universal Design)

