

Junior Suite Twin
 (Universally designed room)
 67.4m² 1room

[Different facilities from Deluxe room]

- Separate bathroom (Toilet / Bath / Basin)
- Width of door and slope
- Wide between beds
- Bathing space for wheelchairs users
- Equipment for ostomates

Electric adjustable bed
 (Remote control is available on request)
 120cm*195cm*48~80cm

Regular Bed
 120cm*203cm*46cm

Control panel
 (Remote control for lighting and curtains)

Handrail installed on the wall of the bothside

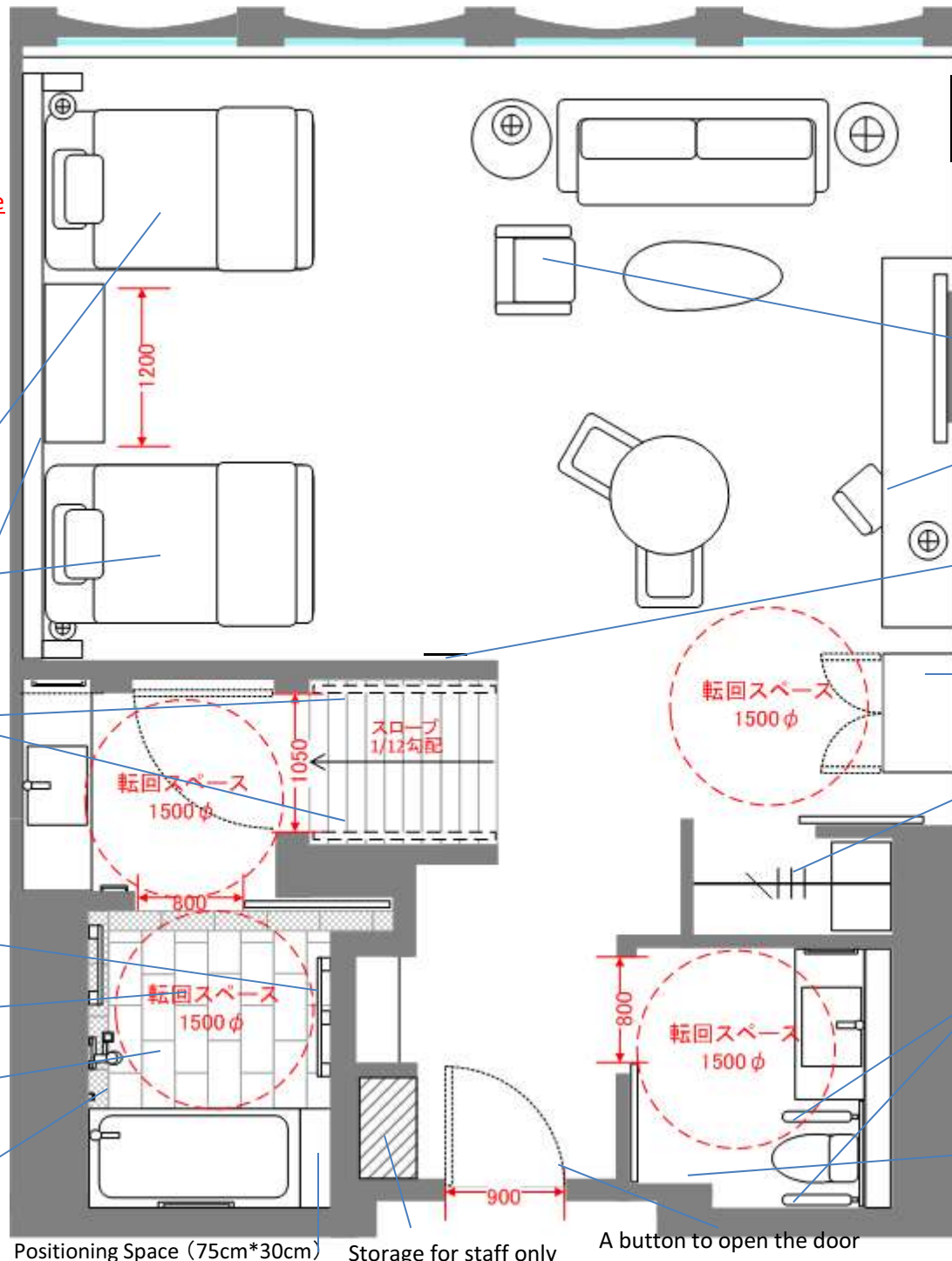
Slope - 1/12
 (Length 156cm, Height 12cm)

Multi-use rails/hanger

Bathing space white seated in wheelchairs
 (Waterproof wheelchair available on request)

Bathroom tiles are slip-resistant and heat retentive

The faucet is placed at the front for easy-access.



The corner mirror can make the room appear larger. To prevent guests with low vision from thinking that there is an extended space beyond, an arm chair has been placed there for safety reasons.

Powered armchair
 (Remote control is available on request)

Under the desktop, there is an indentation to provide a better grip (Height of the desk :72cm)

Door Monitor
 (Visitors will appear on the screen.)

Mini-bar

Height adjustable wardrobe hanger bar
 (170cm、120cm)

Removable handrails and backrest. (Back cushion available on request)

Equipment for ostomates
 (Available on request)



Positioning Space (75cm*30cm)

Storage for staff only

A button to open the door

Junior Suite Twin (Universal Design)

