

Deluxe Twin
(Universally designed room)
35.5m² 10 rooms

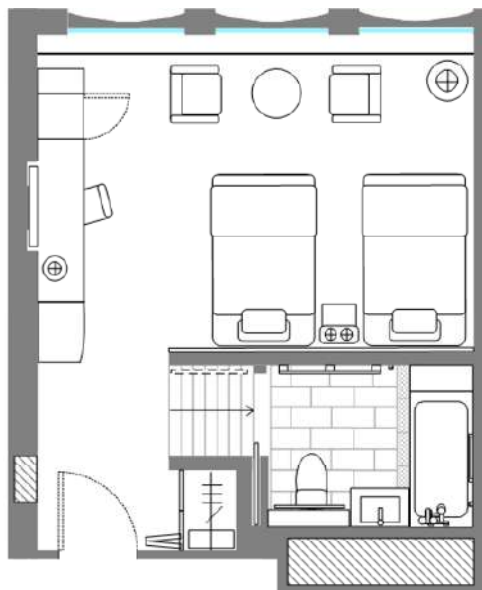
The corner mirror can make the room appear larger. To prevent guests with low vision from thinking that there is an extended space beyond, an arm chair has been placed there for safety reasons.

Electric adjustable bed
(Remote control is available on request)
120cm*195cm*48~80cm

Regular Bed
120cm*203cm*46cm
(Height of the bed is lower than in other guest rooms)

Positioning Space (75cm*40cm)
Height of the bathtub 50cm, depth of 46cm

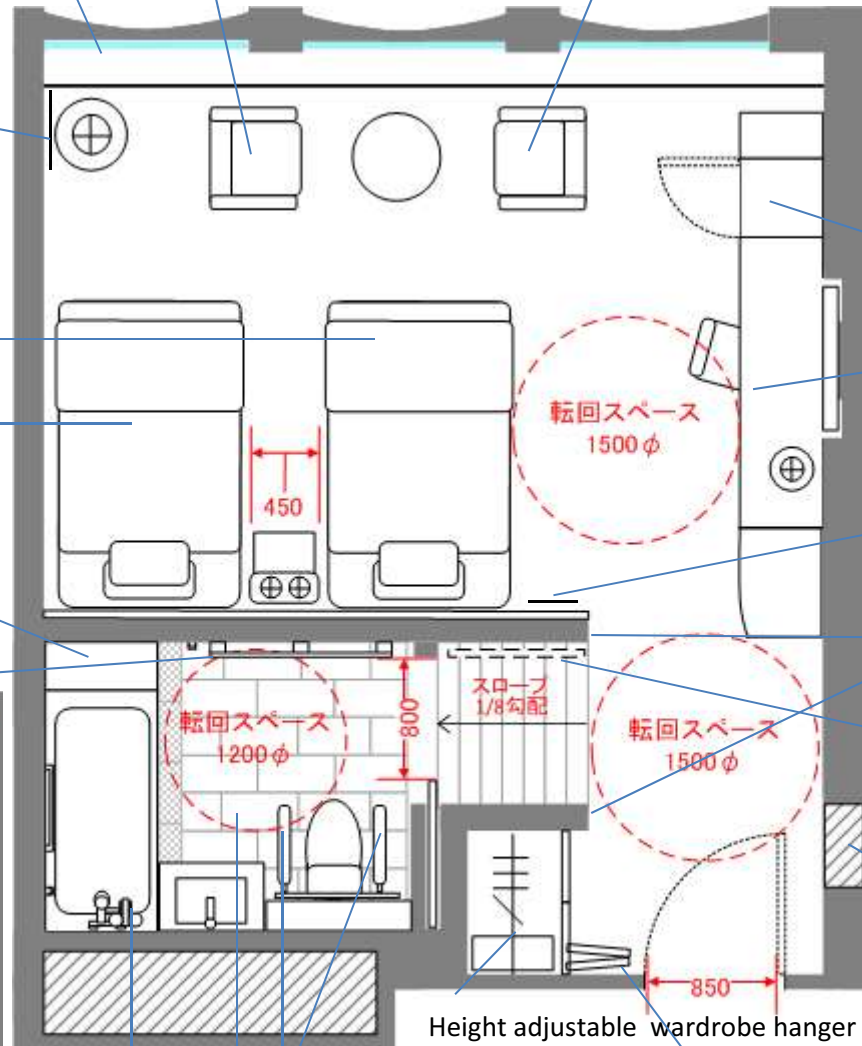
Multi-use rails/hanger



Smart Curtain

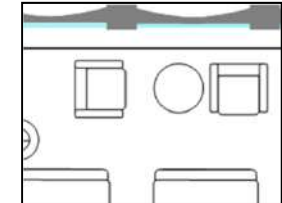
Armchair
(Not Powered)

Powered armchair
(Remote control is available on request)



For wheelchair users, the armchair will be set facing the bed. ↓

Mini-bar
Height 107cm
There is 43cm from the floor to the bottom of the minibar.



Under the desktop, there is an indentation to provide a better grip
(Height of the desk :72cm)

Door Monitor
(Visitors will appear on the screen.)
Control panel
(Remote control for lighting and curtains)
Outlet (for electric wheelchairs)

The pillar-grab handle

Handrail installed on the wall of the bedside
Slope - 1/8
(Length 104cm, Height 12cm)

Storage for staff only
(Items available for use)

Height adjustable wardrobe hanger bar (170cm、120cm)

Removable handrails and backrest.
(Back cushion available on request)

A button to open the door

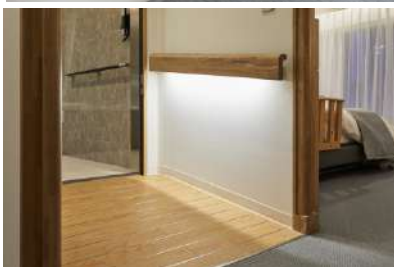
Bathroom tiles are slip-resistant and heat retentive.

The faucet is placed at the front for easy-access.

Deluxe Twin (Universally Designed Room)



Backrest and handrails BEFORE ↑
(Adjustable width & length) AFTER ↓



Slope to the bathroom



Outlet underside of the basin